



Organizing Authority

NOORD LIMBURG MAAS

Maasdijk 1 bus 4 – 3640 Ophoven/Kinrooi

E-mail · info@noordlimburgmaas.be



Limburg Dragon Cup

October 15, 16 and 17, 2021

Sailing instructions

All times in this notice of race are in Belgian summertime GMT+2 24-hour format.

[NP] denotes that a breach of this rule will not be grounds for a protest by a boat. This changes RS 60.1(a)

1. RULES

- 1.1. The event is governed by the rules as defined in the “Racing Rules Of Sailing” (RRS)
- 1.2. The prescriptions of the Belgian Sailing Federation can be found on;
<https://belgiansailing.be/wp-content/uploads/2020/08/Prescriptions-Belgian-Sailing-RRS-2021-2024-ENG.pdf>
- 1.3. RRS 44.1 is changed so that the Two-Turns Penalty is replaced by the One-Turn Penalty

2. CHANGES TO THE SAILING INSTRUCTIONS

- 2.1. Any change to the sailing instructions will be posted before 09:00 hours on the day it will take effect, except that any change to the schedule of races will be posted by 20:00 hours on the day before it will take effect.

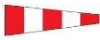
3. NOTICES TO COMPETITORS

- 3.1. Notices to competitors will be posted on the official notice board at the window of the clubhouse.

4. CODE OF CONDUCT

- 4.1. [DP] Competitors and support persons shall comply with reasonable requests from race officials.

5. SIGNALS MADE ASHORE

- 5.1. Signals made ashore will be displayed at flag mast located in front of the clubhouse of the yacht club.
- 5.2. When flag AP  is displayed ashore, ‘1 minute’ is replaced with ‘not less than 30 minutes’ in Race Signals AP.



Limburg Dragon Cup Sailing instructions



6. SCHEDULE OF RACES

6.1. Dates and number of races

Date	Number of races
Friday October 15th	Max. 3 races
Saturday October 16th	Max. 4 races
Sunday October 17th	Max. 3 races

- 6.2. One extra race per day may be sailed, provided that no boats becomes more than one race ahead of schedule. This change of schedule will be made according SI 2.
- 6.3. The scheduled time of the warning signal of the races on each day is:

Date	First Warning signal
Friday October 15th	12:55h.
Saturday October 16th	09:55h.
Sunday October 17th	09:55h.

- 6.4. To alert boats that a race or sequence of races will begin soon, an orange flag will be displayed with one sound for at least five minutes before a warning signal is displayed.
- 6.5. On the last day of the regatta no warning signal will be made after 14:00 hours.

7. CLASS FLAGS

Class:
Dragon

Flag:
Signal flag "D"

8. RACING AREA

- 8.1. Attachment A shows the location of racing area.

9. COURSES

- 9.1. The diagrams in Attachment B show the courses, the order in which marks are to be passed, and the side on which each mark is to be left. The approximate course length will be 45 minutes.
- 9.2. No later than the warning signal, the race committee shall signal the boats by display a numeric pennant, which course should be sailed.
- 9.3. When one gate mark is missing, the remaining mark shall be rounded to port.



Limburg Dragon Cup

Sailing instructions



10. MARKS

- 10.1. Marks of the course are: orange cylindrical buoys.
- 10.2. The starting marks will be a buoy with staff displaying an orange flag at the port side and an orange flag on the starting vessel at the starboard side.
- 10.3. The finishing marks will be a buoy with staff displaying a blue flag and a blue flag on the finishing vessel.

11. ABANDONING A RACE

- 11.1. Under RRS 32.1, the race committee may abandon the race because of a major wind shift or irregular winds or when the wind speed drops below 5 knots (2.5 m/s) as measured by the race committee. Any action or no action by the race committee under this instruction will not be grounds for redress under RRS 60.1(b).

12. THE START

- 12.1. Races will be started by using rule 26 RRS with the warning signal given 5 minutes before the starting signal.
- 12.2. The starting line will be between a buoy with staff displaying an orange flag at the port side and an orange flag on the starting vessel at the starboard side.
- 12.3. A boat starting later than 4 minutes after her starting signal will be scored Did Not Start. This changes RRS A4 and A5

13. CHANGE OF THE NEXT LEG OF THE COURSE

- 13.1. To change the next leg of the course, the race committee will move the original mark or the finishing line to a new position.
- 13.2. The course may be shortened to finish at a rounding mark or a gate provided 3 or more legs have been sailed (excluding the leg between mark 1 and mark 2).

14. THE FINISH

- 14.1. Finishing line will be between a buoy with a staff displaying a blue flag and a blue flag on the finishing vessel.

15. SPARE

16. TIME LIMITS AND TARGET TIMES

- 16.1. Time limits are as follows:

Time Limit Mark 1	Time Limit	Target Time
20 minutes	60 minutes	45 minutes



Limburg Dragon Cup

Sailing instructions



- 16.2. If no boat has passed Mark 1 within the Mark 1 time limit the race will be abandoned.
- 16.3. Failure to meet the target time will not be grounds for redress. This changes RRS 62.1(a)
- 16.4. Boats failing to finish within 15 minutes after the first boat sails the course and finishes will be scored Did Not Finish without a hearing. This changes RRS 35, A4 and A5.

17. HEARING REQUEST

- 17.1. Hearing request forms are available at the regatta office located at the clubhouse of the Yacht club. Protests and request for redress or reopening shall be delivered there within the appropriate time limit.
- 17.2. The protest time limit is 60 minutes after the last boat has finished the last race of the day or the race committee signals no more racing today, whichever is later.
- 17.3. Notices will be posted within 30 minutes of the protest time limit to inform competitors of hearings in which they are parties or named as witnesses. Hearings will be held in the jury room, located at the yacht club, beginning a.s.a.p. after the last race of the day.
- 17.4. Notices of protests by the race committee or jury will be posted to inform boats under rule 61.1(b) RRS.
- 17.5. Arbitrage as is described in appendix T will be offered before a protest hearing.
- 17.6. A list of boats that, under appendix P have been penalized for breaking RRS 42 will be posted.
- 17.7. A request for a decision in writing has to be delivered within one hour after the decision is given verbally. This changes RRS 65.2.
- 17.8. A request for correction of an error in the published results has to be delivered to the R.C. within the protest time limit of the last scheduled day of racing or within 60 minutes after posting of the results, if this is later. The boat shall complete a scoring enquiry form, available at the race office. When the request is not granted, the protest time limit is 30 minutes after the boat is informed that the request is not granted. This changes RRS 62.2.

18. SPARE

19. SCORING

- 19.1. Three races are required to be completed to constitute a series.
- 19.2. When fewer than 4 races have been completed, a boat's series score will be the total of her Race scores.
- 19.3. When 4, 5, 6 or 7 races have been completed, a boat's series score will be the total of her race scores excluding her worst score.
- 19.4. When 8, 9 or 10 races have been completed, a boat's series score will be the total of her race scores excluding her 2 worst scores.

20. SAFETY (NP, DP)

- 20.1. RRS 40.1 is applicable: Each Competitor shall wear a personal flotation except briefly while changing or adjusting clothing or personal equipment. Wet suits and dry suits do not constitute adequate personal buoyancy.
- 20.2. A boat that retires from a race shall notify a race committee, safety/patrol or jury boat as soon as possible and the race office immediately after returning to the shore.



Limburg Dragon Cup

Sailing instructions



21. & 22 SPARE

23. OFFICIAL BOATS

23.1. Official boats will be marked as follows: with flag with "RC" or "JURY"

24. [DP] SUPPORT BOATS

24.1. Team leaders, coaches and other support personnel shall stay outside areas where boats are racing from the time of the preparatory signal for the first class to start until all boats have finished or retired or the race committee signals a postponement, general recall or abandonment.

25. [DP] TRASH DISPOSAL

25.1. When Covid19 National regulations apply no Trash may be placed aboard support and race committee boats. If these are not applicable it can be placed aboard support and race committee boats.

26. SPARE

27. [DP] RADIO COMMUNICATION

27.1. Except in an emergency, a boat shall neither make voice or data transmissions and shall not receive voice or data communication that is not available to all boats.

28. PRIZES

28.1. There will be prizes for the podium places.

29. DISCLAIMER OF LIABILITY

29.1. Competitors participate in the regatta entirely at their own risk. See RRS 3. Decision to Race.

29.2. The Organizing Authority and all their officers, members and volunteers do not accept liability for loss of life or property, or personal injury or damage caused by or arising out of the regatta. Competitors take part in the regatta at their own risk.

29.3. The establishment of the notice of race and the sailing instructions in no way limits or reduces the complete and unlimited responsibilities of a competitor being solely and entirely responsible for the management of a boat he is sailing.

29.4. All competitors shall maintain their boats in a safe and seaworthy condition.

29.5. All competitors shall be of good health and a competent sailor capable of racing a Dragon in open water in all conditions including strong winds.



Limburg Dragon Cup

Sailing instructions



- 29.6. At-fault occurrences to other boats are the responsibility of the helmsman. Competitors are not covered by any liability insurance provided by the organizing authority and should provide their own coverage for personal goods and liability protection. The organizing authority recommends that competitors consult their own insurance carriers to assure they are covered at this event and regarding additional personal liability insurance coverage.
- 29.7. Competitors are recommended to have personal accident and health insurance that covers them while attending the regatta and while racing.

30. RIGHTS TO USE NAME AND LIKENESS

- 30.1. By participating in this event, competitors automatically grant to the organizing authority and the event sponsors the right, in perpetuity, to make, use, and show, at their discretion, any photography, audio video recordings, and other reproductions of them made at the venue or on the water from the time of their arrival at the venue, until their final departure, without compensation.

31. INSURANCE

- 31.1. Each participating boat shall be insured with valid third-party liability insurance with a minimum cover of Euro 1.500.000 per event or the equivalent.

32. ORGANISATION

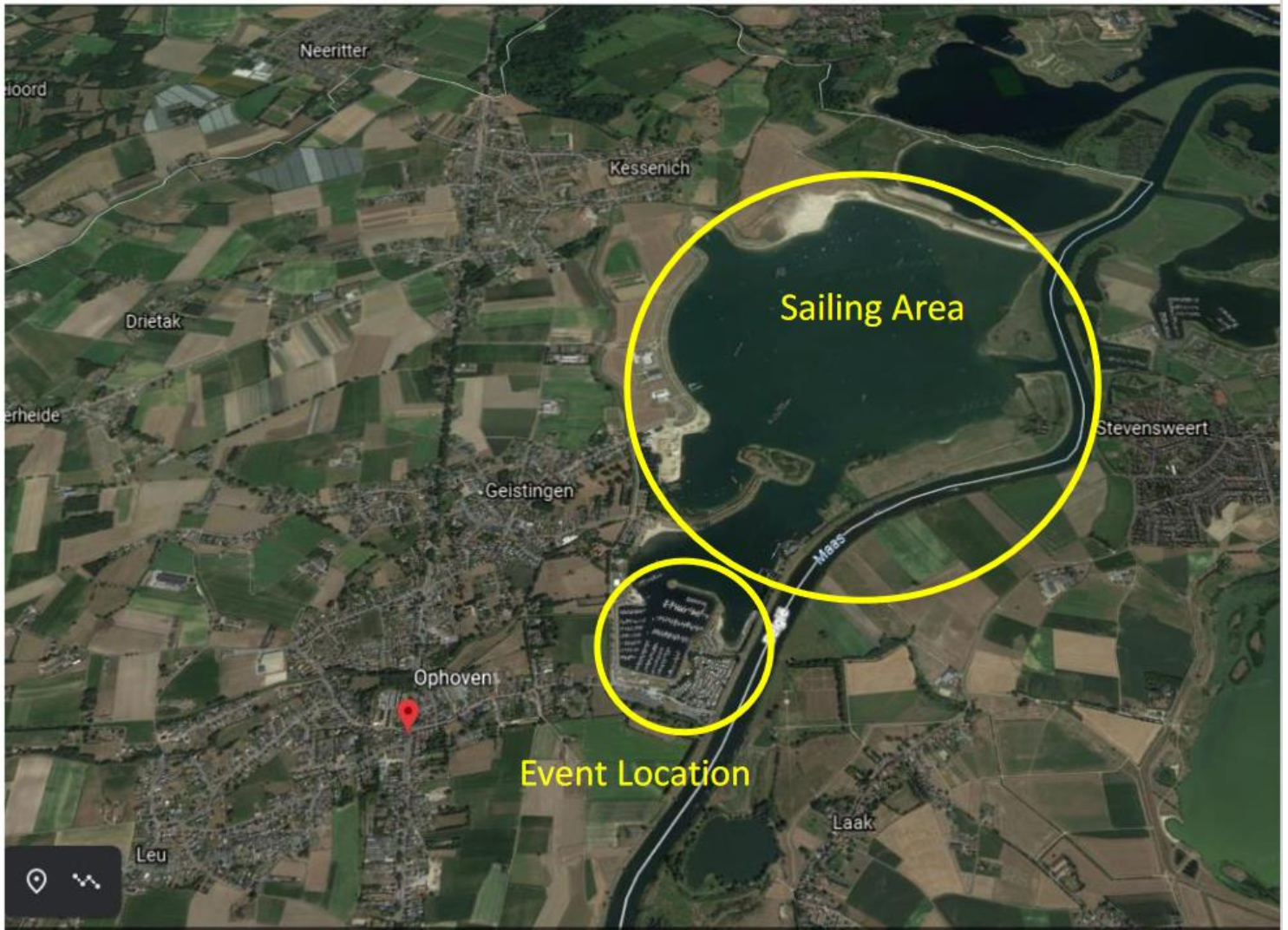
- 32.1. The race officer is: **Neuman Tomi**
- The chairman of the protest committee: **Straus Joep**



Limburg Dragon Cup Sailing instructions



ATTACHEMENT A





Limburg Dragon Cup Sailing instructions



ATTACHEMENT B

COURSE 1 : NUMERIC PENNANT 2

Start - 1 - 2 - 3S/3P - 1 - 2 - 3P - Finish

COURSE 2: NUMERIC PENNANT 3

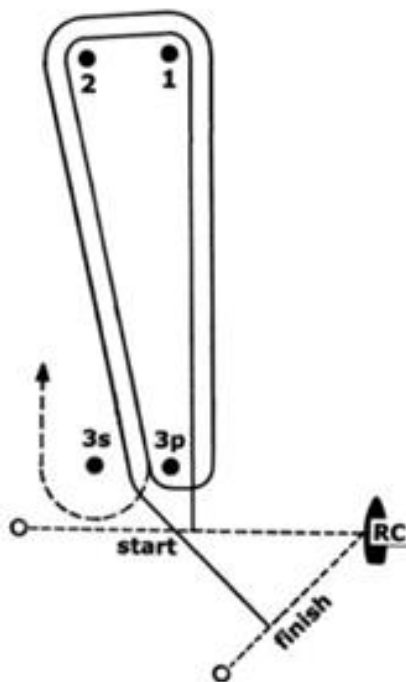
Start - 1 - 2 - 3S/3P - 1 - 2 - 3S/3P - 1 - 2 - 3P - Finish

COURSE 3: NUMERIC PENNANT 4

Start - 1 - 2 - 3S/3P - 1 - 2 - 3S/3P - 1 - 2 - 3S/3P - 1 - 2 - 3P - Finish

Numeric pennant 2

start - 1 - 2 - gate(3s/3p) - 1 - 2 - 3p - finish



	A I have a diver down, keep well clear at slow speed		K I wish to communicate with you		U You are running into danger		1
	B I am taking in, discharging or carrying dangerous goods		L You should stop your vessel instantly		V I require assistance		2
	C Yes (affirmative)		M My vessel is stopped and making no way		W I require medical assistance		3
	D Keep clear of me, I am manoeuvring with difficulty		N No (negative)		X Stop carrying out your intention and watch for my signals		4
	E I am altering my course to starboard		O Man overboard		Y I am dragging my anchor		5
	F I am disabled, communicate with me		P I. Allow to proceed to me 2. My nets have come fast		Z 1. I require a tug 2. I am shooting nets		6
	G 1. I require a pilot 2. I am heaving nets		Q My vessel is healthy and I request to see prizes		7 Code and answering pennant		7
	H I have a pilot on board		R The way is off my starboard, you may feel your way past		8 Four substitute		8
	I I am altering my course to port		S I am exercising extreme propulsion		9 Second substitute		9
	J I am on fire and have dangerous cargo, keep well clear		T Keep clear of me, I am engaged in port tracking		0 Third substitute		0