



ZEILCLUB NOORD LIMBURG MAAS

NOTICE OF RACE

LIMBURG DRAGON CUP

9-10-11 OCTOBER 2020

1. RULES:

- 1.1 The regatta will be governed by the rules as defined in The Racing Rules of Sailing (RRS), the national prescriptions of the RBSF.
- 1.2 Appendix P and T will apply.
- 1.3 If there is a conflict between the NOR and the S.I. the S.I. will take precedence.
- 1.4 Every person on board who has its domicile in Belgium shall present its sailing license upon request at the registration.
- 1.5 Change of crew or material during the regatta is subject to approval by the race committee. Approval will not be given when the required license cannot be shown.
- 1.6 When the word "shall" is used means that this phrase is mandatory.
- 1.7 [C-19] COVID-19 infection prevention: National infection prevention and hygienic regulations will apply. The regulations can be consulted on the official website <https://www.infocoronavirus.be> and https://mobiliteit.belgium.be/nl/scheepvaart/covid_19_coronavirus.
- 1.8 If a protest needs a full hearing, this hearing can be scheduled on site with the requirement to wear a mouth mask and the use of alcohol gel to disinfect your hands.

2. ELIGIBILITY AND ENTRY:

- 2.1 The regatta is open to all boats of the International Dragon Class.
- 2.2 Eligible boats may enter by completing the online entry form.
- 2.3 Please follow this link <https://forms.gle/XwTNJUz3UwqAsh1u8> or scan QR-code below



3. ENTRY FEE:

- 3.1 We kindly ask you to securely transfer your registration fee true the bank account number below before 01-10-2020:
BE12 9733 6300 8992 NLM Clubhouse
- 3.2 With craning 130 €
- 3.3 Without craning 100 €
- 3.4 All entries shall be made by on-line registration. By registering, you are on the waiting list. After payment, your entry will be final.
- 3.5 The entry fee includes Craning in and out, Berthing, Parking places for both cars and trailers, Races as scheduled.

4. SCHEDULE:

- | | | | | |
|-----|----------|------------|---|---------------------------------|
| 4.1 | Friday | 9-10-2020 | 1. Regatta office open between
2. craning
3. First warning signal | 10:00 - 12:00
09:00
12:55 |
| 4.2 | Saturday | 10-10-2020 | 1. Regatta office open between
2. First warning signal | 08:30 - 09:00
10:25 |
| 4.3 | Sunday | 11-10-2020 | 1. Regatta office open between
2. First warning signal | 08:30 – 09:00
10:25 |
- 4.4 When more than one race will be held on the same day, the warning signal for each succeeding race will be made as soon as practicable.
 - 4.5 On the last day of racing, no start will be given after 15:00.

5. SAILING INSTRUCTIONS:

- 5.1 The sailing instructions will be available online on October 4th at <https://www.noordlimburgmaas.be/nl/zeilwedstrijden>
- 5.2 Hardcopies on paper will not be distributed.
- 5.3 S.I. will also be posted at the race office.

6. VENUE:

- 6.1 Attachment A shows the location of the regatta harbour.

7. RACING AREA AND COURSES:

- 7.1 The racing area is shown on appendix A.
- 7.2 The diagram in appendix B shows the Courses, the order in which Marks are to be passed, and the side on which each Mark is to be left.
- 7.3 No later than the warning signal, the race committee will signal the boats by display a numeric flag, which counts the amount windward legs that must be sailed consecutively before finishing.
- 7.4 Marks are to be left on port-side except for the gate marks.
- 7.5 When one gate mark is missing, the remaining mark shall be rounded to port.

8. SCORING:

- 8.1 3 valid races are required to validate the Limburg Dragon Cup.
- 8.2 When fewer than 4 races have been completed, a boat's series score will be the total of her race scores.
- 8.3 When 4 or more races have been completed, a boat's series score will be the total of her race scores excluding her worst score.
- 8.4 When 8 or more races have been completed, a boat's series score will be the total of her race scores excluding her 2 worst scores.

9. BERTHING:

- 9.1 Trailers shall be kept in their assigned places at the boat park; all boats shall be berthed in their assigned places.

10. RADIO COMMUNICATION

- 10.1 Except in an emergency, a boat shall neither make radio-transmissions while racing nor receive radio-communications not available to all boats. This restriction also applies to mobile telephones.

11. PRIZES:

- 11.1 There will be prizes for the podium places.

12. TRASH DISPOSAL

- 12.1 {DP} Boats shall not put trash in the water. Trash may be placed aboard support boats and RC boats. Failure to comply may be ground for a penalty.

13. DISCLAIMER OF LIABILITY:

- 13.1 Competitors participate in the regatta entirely at their own risk. See rule 4, Decision to Race. The organizing authority will not accept any liability for material damage or personal injury or death sustained in conjunction with or prior to, during, or after the regatta.

14. INSURANCE:

- 14.1 Each participating boat shall be insured with valid third-party liability insurance with a minimum cover of € 1.000.000 per event or the equivalent in the currency of the country of registration of the boat. The insurance must be maintained fully effective throughout of the regatta and must be able to be proven. Personal insurance such as accident and health are the sole responsibility of each competitor.

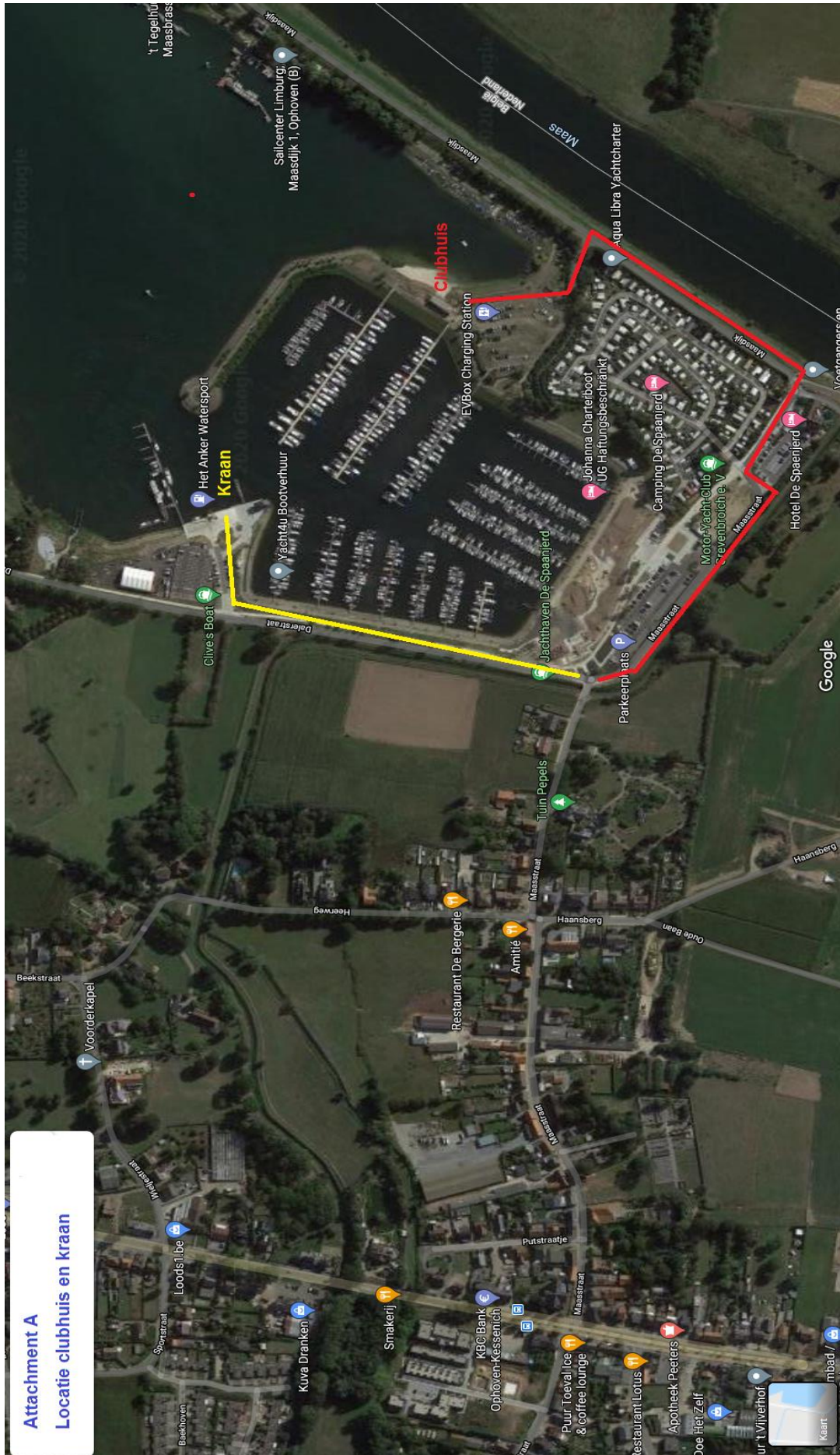
15. RIGHT TO USE NAME AND LIKENESS:

- 15.1 By participating in the Limburg Dragon Cup, a competitor automatically grants this right to the Organizing Authority, the organizers and the sponsors of the event.
- 15.2 By registering for this event, a competitor authorizes the organizing authority (s) to store and process personal data, as stated upon registration, and to publish the results with crew names and boat names. The registration data and results will be retained for a minimum of one year, but not longer than necessary for the organizers.
- 15.3 By entering the Limburg Dragon Cup, competitors accept that they may be photographed and/or videotaped participating in the race and/or using the facilities and they consent to the taking of such images and to the use, reuse, publication and republication of such images in any media, in conjunction with the competitors name or not, without compensation and without the competitors approval of such images or any use thereof. Video cameras can also be put on boats.

16. FURTHER INFORMATION

- 16.1 Nearby recommended hotels :
 - a) Hotel De Spaenjerd, Maasstraat 84 - 3640 Ophoven-Kinrooi, +32 (0)89 32 12 70, despaenjerd@skynet.be (korting voor Drakenzeilers)
 - b) Hotel De Sjeiven Dörpel, Leeuwerikstraat 74 - 3680 Maaseik-Aldeneik, +32 (0)89 56 12 13, www.sjeivendorpel.be c) B&B Amitié, Fam. De Grave, Maasstraat - 3640 Ophoven-Kinrooi, +32 (0)89 25 57 60 amitie-ophoven@outlook.be
 - c) B&B Orgelthuis, Geistingen 26 – 3640 Geistingen, +32 (0)492 50 67 83, info@orgelthuis.be
 - d) Botel, Agropolis Park 102 -3640 Ophoven-Kinrooi, +32 (0)89 418 592, +32(0)494 814 151, info@botelophoven
- 16.2 Tourism Office Kinrooi : Maasstraat 84 – 3640 Kinrooi-Ophoven, +32 (0)89 56 13 24 info@toerismekinrooi.be

ATTACHMENT A:



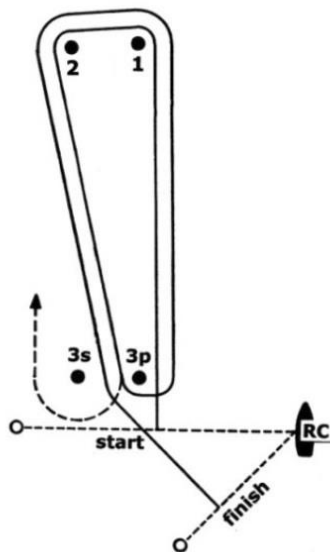
APPENDIX A: RACE AREA



APPENDIX B: COURSE

Numeric penant 2

start - 1 - 2 - gate(3s/3p) - 1 - 2 - 3p - finish



	A I have a diver down, keep well clear or slow speed		K I wish to communicate with you		U You are running into danger		1
	B I am taking in, discharging or carrying dangerous goods		L You should stop your vessel instantly		V I require assistance		2
	C Yes (affirmative)		M My vessel is stopped and making no way		W I require medical assistance		3
	D Keep clear of me, I am manoeuvring with difficulty		N No (negative)		X Show carrying out your intentions and watch for my signals		4
	E I am altering my course to starboard		O Man overboard		Y I am dragging my anchor		5
	F I am disabled, communicate with me		P I am about to proceed to sea		Z I require a tug		6
	G I require a pilot		Q My vessel is heaving to and I request free passage		7 Code and answering pendant		7
	H I have a pilot on board		R This vessel is afire, you may find your way past		8 First substitute		8
	I I am altering my course to port		S I am operating astern propulsion		9 Second substitute		9
	J I am on fire and have dangerous cargo, keep well clear		T Keep clear of me, I am engaged in port manoeuvre		0 Third substitute		0
							RVCB